

- 32V DC Electric Screwdrivers
- Low Torque Brushless Screwdrivers
- 40V DC Screwdrivers to 15Nm
- 230V Direct Plug-In Screwdrivers
- Rotary Torque Sensors
- Screw Feeders
- Tool Balancers
- Tool Stands
- Torque Testers

## EU Product Catalog



ELECTRIC SCREWDRIVERS  
ROTARY TORQUE SENSORS  
SCREW FEEDERS  
TORQUE MEASUREMENT  
TOOL BALANCERS  
TOOL STANDS

**ASSEMBLY SOLUTIONS**  
FOR YOUR FASTENING NEEDS

# index

<b>Electric Screwdrivers</b>	300 Series 32V DC Screwdrivers ( <i>0.02-4.6 Nm</i> )	4 / 5
	380 Series 230V AC Direct Plug-in ( <i>0.4-4.4 Nm</i> )	6 / 7
	600 Series 32V DC Brushless ( <i>0.02-1.0 Nm</i> )	8
	700 Series 40V DC Screwdrivers ( <i>1-15 Nm</i> )	9
<b>Tool Supports</b>	ERGO-25 Parallel Torque Arm	10
	Tool Stand	11
	Tool Balancer	11
<b>Screw Feeders</b>	DRFF-520 Adjustable Rail Screw Feeder	12
<b>Torque Measurement</b>	DRBT-100 Bench Mount Torque Tester	13
	DRTS Series Torque Test System	14/15

Every effort has been made to ensure the accuracy of the information and specifications in this catalog. Delta Regis Tools reserves the right to correct or change any specifications found herein without further notification. Please contact our sales office with any questions or concerns regarding our products.

## 300 Series

## 32 VOLT DC Electric Screwdrivers



Solid construction and innovative design are apparent everywhere on these tools. Accurate torque control and superb ergonomics make them perfect for electronic assembly. All models feature ESD safe housings and externally replaceable brushes. Fan equipped motors and flow through ventilation keep these tools running cool - increasing tool life and operator comfort. Our low torque models are some of the smallest and lightest available, making them well suited for precision assembly operations.

- Accurate Torque Control.
- Lockable Torque Adjustment - optional torque locking sleeve makes it easy to set up and secure.
- Wide Torque Range - single model versatility .
- Rare Earth Magnet Motor - high torque output .
- Low Torque Reaction.
- Compact - light and easy to handle.
- Ergonomic Design - soft cushioning in grip area ensures operator comfort and reduced fatigue.
- All models feature ESD safe housings.
- CE Certified.
- RoHS Compliant.



Model Number	Start Type	Range In.Lbs	Range Nm	Speed (RPM) Hi	Speed (RPM) Lo	Length in / mm	Diameter in / mm	Weight lbs / g
ESL310S-ESD	Lever	0.2 - 3.1	0.02 - 0.35	500	350	8.9 / 205	1.25 / 32	0.7 / 280
ESL310-ESD	Lever	0.2 - 3.1	0.02 - 0.35	1000	700	8.9 / 205	1.25 / 32	0.7 / 280
ESL311-ESD	Lever	0.4 - 6.2	0.05 - 0.7	1000	700	8.9 / 205	1.25 / 32	0.7 / 280
ESL312-ESD	Lever	0.9 - 8.8	0.1 - 1.0	670	470	8.9 / 205	1.25 / 32	0.7 / 280
ESL323-ESD	Lever	2 - 12	0.2 - 1.4	1000	700	9.4 / 230	1.46 / 37	1.1 / 480
ESL323P-ESD	Push	2 - 12	0.2 - 1.4	1000	700	9.4 / 230	1.46 / 37	1.1 / 480
ESL324-ESD	Lever	3 - 16	0.3 - 1.8	1000	700	9.4 / 230	1.46 / 37	1.1 / 480
ESL324P-ESD	Push	3 - 16	0.3 - 1.8	1000	700	9.4 / 230	1.46 / 37	1.1 / 480
ESL327-ESD	Lever	6 - 23	0.68 - 2.6	850	600	10 / 260	1.5 / 38	1.3 / 600
ESL327P-ESD	Push	6 - 23	0.68 - 2.6	850	600	10 / 260	1.5 / 38	1.3 / 600
ESL328-ESD	Lever	7 - 30	0.8 - 3.4	570	400	10 / 260	1.5 / 38	1.3 / 600
ESL328P-ESD	Push	7 - 30	0.8 - 3.4	570	400	10 / 260	1.5 / 38	1.3 / 600
ESL329-ESD	Lever	15 - 41	1.7 - 4.6	530	370	10.5 / 267	1.5 / 38	1.8 / 820
ESL329P-ESD	Push	15 - 41	1.7 - 4.6	530	370	10.5 / 267	1.5 / 38	1.8 / 820

## Power Controllers

The 300 Series of power supply / controllers act as AC to DC transformers and torque controllers. The electronic control circuit cuts the power to the motor in response to the clutch signal from the electric screwdriver. These units feature Hi/Lo or Variable speed selection. An economical ECT330/CE is available for use with the smaller 32VDC screwdrivers.



ECT320 Controller

Model Number	Outlets	Speeds	CE & RoHS Approved	Output	Input	Dimensions L x W x H (mm)	Weight (kg)
ECT320E	1	Hi/Lo	YES	32V DC	100-240V AC	196 x 76 x 56	1.0
ECT320VE	1	Variable	YES	32V DC	100-240V AC	196 x 76 x 56	1.0
ECT330/CE*	1	Hi/Lo	YES	32V DC	220VAC	130 x 91 x 66	1.5

\*Suitable for use with models ESL310/310S/311/312/323/323P/324/324P only.

## Slow-Start / Output Signal Module

The ECT3-SSO control module allows you to add “Slow-Start” and “Output Signal” capability to your Delta Regis 32V electric screwdrivers. This external control module plugs in-line between our 32V DC power supply / controllers and your electric screwdriver to provide an adjustable slow-start control and output signal capability.



ECT3-SSO Slow-Start Module

Model Number	Slow Start Time	Slow Start Speed	Signal Output (Relay Contact)	Cable Length	Dimensions (mm)
ECT3-SSO	0 ~ 3 seconds	30-100% full speed	30V DC, 0.3A 30V AC, 0.3A	0.3m	58 x 94 x 36

## 32VDC Screwdriver Accessories

Description	Part Number	Applicable Models
Angle Attachment	DR80-10160	ESL327/328/329
Angle Attachment	DR80-10161	ESL323/324
Cable assembly, 6-pin, 2m	DR96-10016B	all 32V DC models
Cable assembly, 6-pin, 3m	DR96-10018	all 32V DC models
Cable assembly, 6-pin, 6m	DR96-10020	all 32V DC models
Cable assembly, 6-pin, 9m	DR96-10030	all 32V DC models
Pistol Grip Attachment	DR80-10070	ESL310/310S/311/312
Pistol Grip Attachment	DR80-10080	ESL323/323P/324/324P/327/327P/328/328P
Pistol Grip Attachment	DR80-10099	ESL329/329P
Tool Holster	DR80-10136	ESL310/310S/311/312/323*/324*
Tool Holster	DR80-10135	ESL327/327P/328/328P/329/329P
Torque Locking Sleeve	DR80-10130	ESL329/329P
Torque Locking Sleeve	DR80-10131	ESL327/327P/328/328P
Torque Locking Sleeve	DR80-10133	ESL310/310S/311/312
Torque Locking Sleeve	DR80-10134	ESL323/323P/324/324P
Vacuum Pick-up		Please contact us per application

\*Note regarding tool holsters: If the ESL323/324 has a torque locking sleeve installed, use the larger DR80-10135 tool holster.



DR80-10070  
Pistol Grip



DR80-10160  
Angle Attachment



DR80-10133  
Torque Locking Sleeve



DR96-10016B  
Cable Assembly



DR80-10135  
Tool Holster

## 380 Series 230 VOLT AC Electric Screwdrivers

The direct plug-in 380 Series electric screwdrivers are specifically designed to meet the requirements of the European manufacturing market. Accurate torque control and a rubberized ergonomic grip make them an ideal solution for demanding production assembly applications. These units plug directly into a 220VAC outlet eliminating the need for an external power supply. Stepless torque adjustment in ranges starting from 0.4 to 4.4 Nm.

- Convenient Direct Plug-In Design - internal power and control circuitry allows driver to plug directly into 220VAC
- Once the preset torque is reached, the screwdriver shuts off - the start mechanism must be reset to run again
- External Torque Adjustment Nut - easy to set up and secure with optional torque lock sleeve.
- Ergonomic Design - soft cushioning in grip area ensures operator comfort and reduced fatigue.
- Externally replaceable brushes for ease of maintenance
- 3m power cord with European standard plug
- 1/4 inch hex quick change chuck allows rapid bit change
- Available in lever or push start models - higher speed 'F' versions also available for fasteners with long rundowns.
- All models are CE and RoHS compliant



Specifications	
Input Voltage	220VAC, 50/60Hz
AC Plug Type*	European
Bit Holder	1/4" Hex
Length	286mm (11.3in)
Diameter	41.2mm (1.6in)
Weight	700g (1.6lb)
Accessories (not included)	
Torque Lock Sleeve	DR80-10130
Tool Holder	DR80-10135
Tool Balancer	DR90-10104

Model Number	Start Type	Range Nm	Range In.Lbs	Speed (RPM)
ESL383E	Lever Start	0.5 - 2.16	4.4 - 19	1000
ESL383FE	Lever Start	0.39 - 1.67	3.5 - 15	1900
ESL384E	Lever Start	0.98 - 2.94	8.8 - 26	700
ESL384FE	Lever Start	0.98 - 2.94	8.8 - 26	1000
ESL385E	Lever Start	1.47 - 4.41	13 - 39.2	500
ESL383PE	Push Start	0.5 - 2.16	4.4 - 19	1000
ESL383PFE	Push Start	0.39 - 1.67	3.5 - 15	1900
ESL384PE	Push Start	0.98 - 2.94	8.8 - 26	700
ESL384PFE	Push Start	0.98 - 2.94	8.8 - 26	1000
ESL385PE	Push Start	1.47 - 4.41	13 - 39.2	500

\*Euro Plug is standard - For British plug, add suffix 'UK' to model number

# Shut-Off Clutch Screwdriver Accessories

## Pistol Grip Attachments

Convert your tools to pistol grip configuration with this pistol grip attachment. The kit includes a bail for suspending the tool in a balanced horizontal position.

- Clamshell design facilitates easy installation and removal
- Comfort grip reduces operator fatigue

Part Number	Applicable Models
DR80-10099 .....	All models



## Angle Attachment

Convert your screwdriver to an angle driver.

Part Number	Applicable Models
DR80-10160 .....	All models



## Torque Locking Sleeve

The torque locking sleeve threads on over the torque adjusting nut to prevent tampering with the torque setting.

Part Number	Applicable Models
DR80-10130 .....	All models



## Tool Holster

A great alternative for those situations when a tool stand and balancer cannot be used. Keeps your screwdriver at the ready and preserves useable real estate on your work surface. Fastens to the edge of work surface with 3 screws.

Part Number	Applicable Models
DR80-10135 .....	All models



## Tool Stands

Tool stands are recommended to protect your investment and decrease clutter on your workbench. The DR90-30001 tool stand will support up to 10 lbs total.

Part Number	Description
DR90-30001 .....	Tool Stand 110cm high x 60cm reach
DR90-3ARMKIT .....	Extra Arm Kit
DR90-3CLAMP .....	Bench Clamp



## Tool Balancers

Tool balancers in conjunction with a tool stand will keep your screwdriver at the ready, leaving your work area clear when not in use. These tool balancers feature easy adjustment and installation.

Part Number	Description	Applicable Models
DR90-10104 .....	0.6–1.5 kg, 1.8 m travel.....	All



## 600 Series

## DC Brushless Electric Screwdrivers

The New 600 Series Brushless Screwdrivers provide the ultimate combination of ergonomics, precision, and environmental cleanliness to the installation of small fasteners. The quiet, brushless DC motor does not create the carbon dust generated by the brushes in a conventional DC motor. The motor's low power consumption results in a tool that runs cooler, even under demanding applications.

- Precise Torque Control.
- Low Torque Reaction.
- Quiet, Brushless DC motor means no carbon dust.
- Ultra-Compact body design with cushioned grip results in exceptional maneuverability and operator comfort.
- Less heat build-up than conventional motors.
- Brushless design results in low maintenance.
- All models feature ESD safe housings.
- CE Certified.
- RoHS Compliant.



ESL612-ESD



Model Number	Start Type	Range In.Lbs	Range Nm	Speed (RPM) Hi	Speed (RPM) Lo	Length in / mm	Diameter in / mm	Weight lbs / g
ESL610-ESD	Lever	0.2 - 3.1	0.02 - 0.35	1000	700	7.3 / 185	1.25 / 32	0.85 / 385
ESL611-ESD	Lever	0.4 - 6.2	0.05 - 0.69	1000	700	7.3 / 185	1.25 / 32	0.85 / 385
ESL612-ESD	Lever	0.9 - 8.7	0.10 - 0.98	1000	700	7.3 / 185	1.25 / 32	0.85 / 385

## Power Controller

The BECT626E Controller is designed specifically to run the ESL600 Brushless Series Screwdrivers. The compact, lightweight controller accepts input voltages of 100-240VAC, 50/60Hz. Output voltage to the driver is 32VDC on Hi and 20VDC on Low.

Model Number	Outlets	Speeds	CE & RoHS Approved	Output	Input	Dimensions L x W x H (mm)	Weight (kg)
BECT626E	1	Hi/Lo	YES	32V DC	100-240V AC	145 x 60 x 35	0.25



BECT626E

Power supply shipped with standard European plug. For UK plug, please add suffix '-UK' to part number.

# 700 Series

## 40 VOLT DC Electric Screwdrivers

Delta Regis is pleased to announce the introduction of the NEW 700 SERIES. Outstanding performance and ergonomic design give the 700 SERIES screwdriver all the benefits of an electric screwdriver with the TORQUE & SPEED capabilities of a pneumatic tool.

- Torque Range 1-15 Nm (9-130 In.Lbs)
- Exceptional Power, High Speed
- Externally Replaceable Brushes
- Wide Torque Range, Excellent Repeatability
- Top or Bottom cable connection (pistol models)
- Pistol grip models come with removable side handle for a secure grip to react higher torques
- Standard 1/4" hex (6.35mm) bit holder - optional 3/8" square drive available on pistol models
- CE/RoHS Compliant



Model Number	Start Type	Range In.Lbs	Range Nm	Speed (RPM)	Length in / mm	Diameter in / mm	Weight lbs / g
In-line (Straight) models							
ESL710	Lever	8.7 - 26	0.98 - 2.94	2000	10.5 / 267	1.5 / 38	1.8 / 817
ESL710P	Push	8.7 - 26	0.98 - 2.94	2000	10.5 / 267	1.5 / 38	1.8 / 817
ESL720	Lever	17.4 - 43.4	1.96 - 4.9	1000	10.5 / 267	1.5 / 38	1.8 / 817
ESL720P	Push	17.4 - 43.4	1.96 - 4.9	1000	10.5 / 267	1.5 / 38	1.8 / 817
Pistol (T-handle) models							
ESP720	Trigger	17.4 - 43.4	1.96 - 4.9	1000	10.7 / 272	1.6 / 41	2.8 / 1271
ESP730	Trigger	26.0 - 65.1	2.94 - 7.36	750	10.7 / 272	1.6 / 41	2.8 / 1271
ESP740	Trigger	34.7 - 86.8	3.92 - 9.8	550	10.7 / 272	1.6 / 41	2.8 / 1271
ESP750	Trigger	52.0 - 130.2	5.88 - 14.71	350	10.7 / 272	1.6 / 41	2.8 / 1271

Options (pistol models): Add suffix '-U' to part number for top cable connection (bottom connection standard)  
Add suffix '-SQ' for 3/8" male square drive spindle (1/4" hex power bit holder standard)

Controller Model Number	Outlets	Speeds	CE & RoHS Approved	Output	Input	Dimensions L x W x H (mm)	Weight (kg)
ECT700E	1	Single	YES	40V DC	100-240V AC	210 x 118 x 90	2.0

Power supply shipped with standard European plug. For UK plug, please add suffix '-UK' to part number.  
Tools and controllers for fixture mount applications are available. Please contact Delta Regis for further details.

## ERGO-25 Precision Parallel Torque Arm

The ERGO-25 Parallel Torque Arm is designed to maintain a power tool in a vertical attitude. The pneumatic lift cylinder removes the weight of the tool from the operator's hand. Reaction torque is isolated from the operator and transferred through the base of the arm to the mounting surface. All pivot points combine tight machining tolerances with ball and needle bearings for precision and ease of motion.

- precision arm designed to hold screwdrivers and tappers
- perfect partner to the higher torque 700 Series screwdrivers
- consistency of arm improves driver torque repeatability
- all moving axes are equipped with ball and needle bearings
- solid and durable construction provides precise movement
- pneumatic cylinder supports the weight of the tool
- adjustable air pressure regulator varies lifting force
- non-return-valve protects from sudden dropping
- no torque reaction from the tool to the operator
- appealing design with anodized aluminum finish
- excellent price versus performance value
- requires compressed air supply



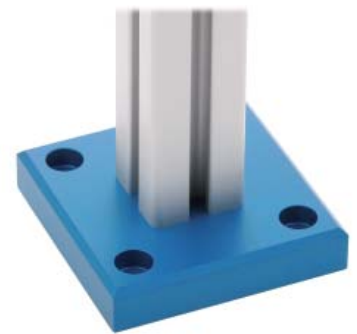
*Pneumatic Cylinder*



*Universal tool fixture accepts up to 1.57 in. diameter tool*



*Air pressure regulator adjusts vertical lift force of the arm*



*Solid base for mounting (4 screws req'd)*

Model	Height	Stroke vertical	Work radius	Torque max.	Tool Weight max.	Torque Arm Weight
	cm [in.]	cm [in.]	cm [in.]	Nm [ft.lb]	kg [lb]	kg [lb]
ERGO-25	58 [22.8]	35 [13.7]	85 [33.5]	25 [18.5]	2.0 [4.4]	7.2 [16]

# Tool Support

## DR90-20004 Economy Torque Arm

Reduce employee injury by absorbing torque transmission, eliminating repetitive strain on hands, wrists and arms. These arms are capable of supporting tools up to 5 lbs (2.27 kg) while withstanding torque reaction up to 20 ft-lbs (27 Nm).

A pneumatic tool adaptor is built-in, electric tools are attached via an optional tool adaptor, P/N DR90-20007.

- Easy to install with lightweight aluminum construction.
- Tool weight is supported by a spring loaded arm assembly. Spring tension is adjustable.
- Parallel arm maintains tool perpendicular to work surface.
- Adjustable height.



Part Number	Description
DR90-20004	Torque Arm
DR90-20007	Electric Tool Adaptor

## Tool Stands and Balancers



Using a tool balancer in conjunction with a tool stand will keep your screwdriver at the ready, leaving your work area clear when not in use. The DR90-30001 tool stand fastens directly to your workbench (screws req'd). An optional extra arm kit can be used to suspend two tools from the same stand. Our tool balancer has a tension adjustment to accommodate different sizes of tools.



Part Number	Description
DR90-30001	Tool Stand - 110 cm high, 60 cm reach, 4 kg maximum load
DR90-3ARMKIT	Extra Arm Kit - 60 cm reach
DR90-10104	Tool Balancer - 0.6-1.5 kg weight range, 1.8 m travel

## DRFF-520 Precision Screw Feeder

The Fast Feed 520 utilizes a precision feed system suitable for almost any type of screw. The Fast Feed 520 also features three adjustments giving the user superb control over feed speed and time. Thanks to the superior design of the rail, it can be easily adjusted to feed screw sizes from 1.0 to 5.2 mm.

- One rail to accommodate many screw sizes
- Multiple adjustments = Optimized feed rate
- Less moving parts increases the durability
- Low maintenance / Easy to service
- Quiet operation



Delta Regis FF520

Specifications	
Model Number	DRFF-520
Screw Thread Diameter	1.0-5.2mm (#0-#10)
Max. Screw Length	19mm (0.75 in)
Dimensions L x W x H	183 x 125 x 142 mm
Weight	2.5 kg
Accessories (included)	
AC Adapter, Rail Adjustment Kit, Manual	



Rail adjustment kit

Each DRFF-520 Screw Feeder includes a step-by-step quick start guide with illustrations to simplify the set-up process.



### Faster Feeding Speeds

Because the hopper supplies a large quantity of screws to the rail and the rail feeds the screws smoothly, the screw replenishment rate is fast enough to keep up with the quickest operators.

### Features

The DRFF-520 is compact and lightweight. The feeder costs only a fraction of the price of a conventional bowl feeder. It features multiple adjustments to dial in the optimal feed rate including: Vibration Timer, Vibration Intensity, and Drum Timer.

These adjustments allow you to fine tune the unit to your specific application and screw type.

## DRBT Series *Bench Mount Torque Tester*

Set and verify the torque output of your electric screwdriver with the DRBT Series torque tester. It's bench mount design and wide torque measuring range make it well-suited for use in the production area, repair shop, or quality control lab. Two rundown joints and a battery charger are included with each DRBT tester. The entire package is housed in a protective carrying case and includes a certificate of calibration.



### Important Features of the DRBT Series

- Wide torque measuring range
- Accuracy of +/- 0.5% from 10-100% of full scale
- Selectable measuring units - Kgf.cm, Nm, Lbf.in
- Track, Peak, and Initial Peak measuring modes
- Store up to 999 torque readings, output data via on-board USB connection (cable not included)
- Selectable auto-zero function to clear display automatically after a preset time of between 0.5-3.0 seconds
- User entry of hi/lo torque limits - in peak mode, the tester will compare the rundown torque to the set limits and indicate either Good (green led) or NG (red led)
- Display Statistics - Min, Max, and Average torque for the last group of rundowns (up to 30 data points)
- Internal rechargeable battery pack. Charge time less than 8 hrs, Run time approx 30 hrs at full charge
- Not for use with impact tools



Specifications		
Model Number	DRBT-10	DRBT-100
Torque Range	0.15-10 Kgf.cm	1.5-100 Kgf.cm
	0.015-1.000 Nm	0.15-10 Nm
	0.15-9.00 Lbf.in	1.5-90 Lbf.in
Accuracy (10-100% FS)	+/- 0.5% I.V.	
Dimensions L x W x H (mm)	230 x 123 x 65	
Weight (kg)	2.0	
Accessories (included)		
AC Adapter	220-240 VAC Input	
	7.2VDC, 120mA Output	
Rundown Joints	2 included	

# DRTS Series Torque Test System

Verify the torque of your Electric and Pneumatic Screwdrivers where it counts - directly on the application! Take the guesswork out of your calibration using the DRTS Torque Test System.

- Everything you need to set or verify torque values is included with the DRTS system, housed in a protective carrying case.
- Set the tool directly on your application - avoid the complexities of simulating joint types on off-line bench torque testers.
- Simply remove the bit from your screwdriver and install the DRTX torque sensor between the bit and the screwdriver. Hook up the DRTM torque meter to the sensor, set the parameters with the included instructions, and take sample readings while you run the tool directly on the job.
- The rugged design of the DRTS System makes it ideal for lab, manufacturing, life cycle test, and quality audit applications.



## Model Numbers

System Model No.	Max. Capacity		Drive Size	Includes Sensor model
	Nm	in.lbs		
DRTS3-02	2	20	1/4 hex	DRTX3200-02
DRTS3-05	5	50	1/4 hex	DRTX3200-05
DRTS3-10	10	100	1/4 hex	DRTX3200-10

Each DRTS Torque Test System includes:

### DRTM-20 Torque Meter with DRTM3901-01 AC Adaptor

The DRTM-20 automatically identifies the DRTX torque sensor for easy set-up. The available 'verify' mode provides accept/reject indication based on user-set hi and low torque limits. The AC adaptor charges the DRTM's six NiMh batteries - a full charge renders approx. 8 hours of use.

### DRTX Torque Sensor

The DRTX sensor utilizes magnetostatic, non-contact sensor technology. It is suited for use with shut-off clutch, slip clutch, and stall type pneumatic and electric drivers, as well as pulse tools.

### DRTM39001-2 Signal Cable

The included 2 meter (6.5 ft) cable transfers the power and signals between the DRTM-20 torque meter and the DRTX torque sensor.

### Carrying Case

Foam lined, high impact plastic carrying case protects and stores the DRTS System

## Accessories

### Optional Signal Cables

- DRTM39001-1 (1m)
- DRTM39001-3 (3m)
- DRTM39001-10 (10m)

### RS-232 Data Cables

- DRTM9103-1 (1m)
- DRTM9103-2 (2m)
- DRTM9103-3 (3m)

# Specifications



## DRTM-20 Torque Monitor Specifications

Characteristic	Specification
Excitation Voltage	5 volts
Display	LCD display
Resolution	3.5 digits
Accuracy	0.5% FS
Signal to Noise Ratio	82 dB
Memories	100
Controls	Six button keypad: Back; Forward; Mode; Clear/Zero; On/Off; Enter
Modes	Tracking, Positive Peak, Negative Peak, High Limit, Low Limit, Verify, Data Display, Systems Options, Systems Submenu "Units", Filter, Timeout, Sense
Filters	400 Hz, 800 Hz, 1600 Hz, 3000 Hz
Output (standard)	15 pin RS232
Output (optional)	Analog signal, Accept/Reject contact closure, 200V peak resistive, 0.5 A make/break, 1 A continuous
Adapter / Charger	115V
Batteries	6 AA NiMh ( <b>IMPORTANT!</b> Only use NiMh batteries)
Battery Life	8 hours
Full Charge Time	2 hours
Dimensions	4.25"W x 7.5"H x 2.25"D
Weight	1.6 lbs



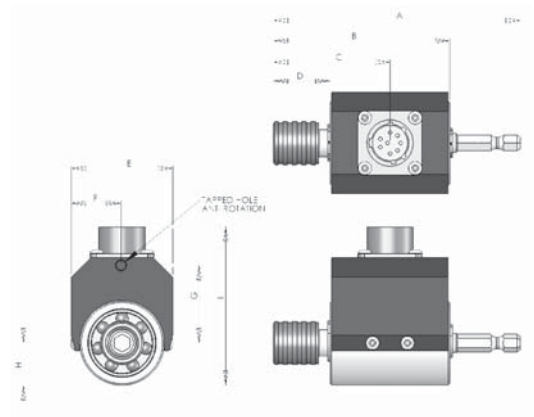
## DRTX-Series Torque Sensor Specifications

Characteristic	Specification
Power Requirement	5 volts, regulated
Current Draw	15 mA
Torque Signal output	0.5 to 4.5 VDC
Non Linearity	< 0.50% FS
Repeatability	< 0.25% FS
Hysteresis	< 0.50% FS
Frequency Response	10,000 Hz, minimum
Rotational Speed	5000 Continuous; 10,000 RPM Intermittent
Overload Capacity	150% FS
Resistance to Magnetic Fields	400 Gauss minimum
Operating Range	-10 to 70 deg.C
Temperature Effects on Zero and Output	+/- 0.04% FS / deg. C
Insulation to Ground	> 100,000 M ohms
Side Load / Bending Error	< 0.001% FS
Rotational Effect on Output	< 0.5% Full Scale
Rotational Effect on Output (2 Nm sensor)	< 1% Full Scale

## Hex Drive Sensor Dimensions

Hex Drive Model	Inches /Millimeters								
	A	B	C	D	E	F	G	H	I
1/4" Hex	3.98 / 101.09	2.84 / 72.14	1.88 / 47.75	0.91 / 23.11	1.64 / 41.66	0.82 / 20.83	1.22 / 30.99	0.68 / 17.27	2.55 / 64.77

Note: All product information is subject to change





3315 Industrial 25th Street  
Fort Pierce, FL USA 34946  
T: (888) 500-2755 or (772) 465-4302  
F: (866) 500-7270 or (772) 465-4368  
[www.deltaregis.com](http://www.deltaregis.com)